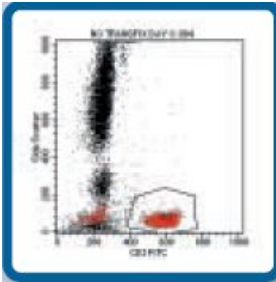


Stabilise Your
Results With.....

TransFix[®]

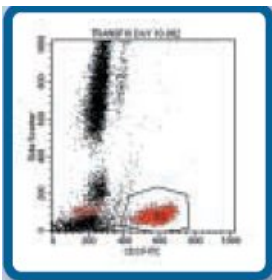
TransFix is a patented cellular stabilisation solution that will stabilise cellular antigens for up to 10 days. The primary application of TransFix is to stabilise peripheral whole blood for immunohaematology, flow cytometry and blood donor screening. TransFix can also be used to stabilise Cerebrospinal Fluid (CSF), Bone Marrow and Fine Needle Aspirates.



No
TransFix
Day 0

Intended Use and Principles of Stabilisation

The active components of TransFix will stabilise cellular antigens for up to 10 days. For immunophenotyping and immune monitoring of whole blood, TransFix is added at a ratio of 200µl per ml (1:5) directly to the whole blood sample. The TransFix treated blood is subsequently processed as a "routine" sample for immunophenotyping procedures. The staining profile will be maintained for up to 10 days when stored at 4-24°C or for 3 days if samples are stored at temperatures of 25-37°C.

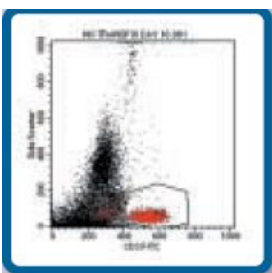


TransFix
Day 10



CSF Storage Tubes

Benefits of TransFix[®]
Stabilises samples for up to 10 days at temperatures of 4-24°C & for 3 days at temperatures of 25-37°C
Easy to use; add TransFix, mix by inversion & store



No
TransFix
Day 10

The CSF storage tube contains 0.2ml of TransFix/ EDTA which is sufficient to stabilise up to 5ml of CSF.

Cerebrospinal Fluid (CSF) can be stabilised and stored in TransFix/EDTA for up to 10 days allowing samples to be batched and transported safely.

TransFix CSF storage tubes are available in packs of 10, 25 and 50.

Alternative TransFix Formats

TransFix is also available in the following formats:

- * Vacuum Blood Collection Tubes
- * Single-use Sample Storage Tubes
- * Bulk Volumes

**TransFix
Samples
Available
on Request**

WWW.CYTOMARK.CO.UK



Whole Blood Controls for Flow Cytometry

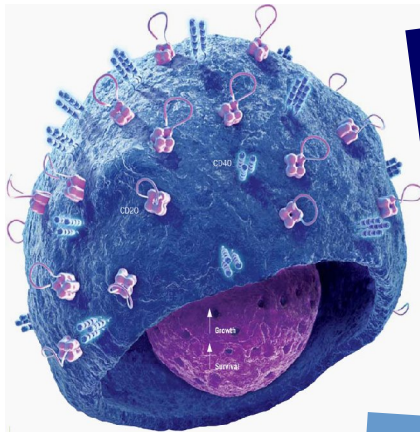


CytoFix Blood Controls have been developed for Immune Monitoring and Immunophenotyping. CytoFix controls are stable for up to 90 days when stored at 4°C. Two controls are available, a Normal Blood Profile and a Low CD⁺ Count Profile. These controls can be purchased separately or as a pair.

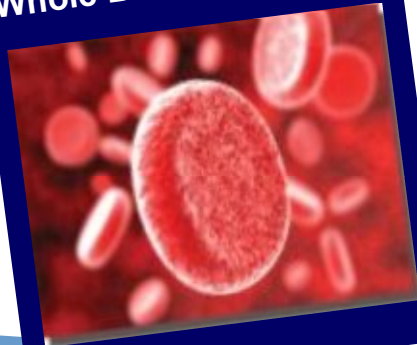
Intended Use of CytoFix Blood Controls

CytoFix controls are manufactured from whole human blood are intended as daily run controls for Immune Monitoring. The white cell profile is adjusted prior to stabilisation to give a specific CD⁺ Count. The Normal Control (**CF04N**) has a CD4+ Count of between 750 and 900 and the CD4+ Low Control (**CF04L**) has a CD4+ Count of between 200 and 300.

CytoFix whole blood controls can also be used to support an External Quality Assurance programme due to their exceptional stability.



Whole Blood Controls



Shelf Life

CytoFix whole blood controls are stable for 90 days when stored at 4°C.

Open vial stability is 30 days.

Product Codes

CF04L - CD4 Normal

CF04L - CD4 Low

CFDUO - CD4 High & Low

Quality Control

Every batch of CytoFix Controls is supplied with a detailed Quality Control Certificate detailing the Average Count for each analyte and the Range (+/- 2SD)

**CytoFix
Samples are
Available
on Request**

TransFix and CytoFix are manufactured by Cytomark a Division of Caltag Medsystems in the UK.

Tel:+44 (0)1280 827460 Fax:+44 (0)1280 827466

Email: Sales@caltagmedsystems.co.uk

Bioleague GmbH & Co. KG

Telefon: +49 (0)4543 8088 422 Fax: +49 (0)4543 8088 423

E-Mail: info@bioleague.de - www.bioleague.de